



chemfeed

Exclusive Griffco distributor
 Regulierenring 26
 NL-3981LA Bunnik
www.chemfeed.nl
info@chemfeed.nl
 Tel: +31 88 022 5300

BPMP-SERIES BACK PRESSURE VALVES



Griffco BPMP-Series diaphragm back pressure valves are designed to enhance the performance of chemical feed systems by applying a continuous back pressure to the chemical feed pump, while also acting as an anti-siphon valve. Robust construction ensures reliability in the rigorous service of municipal and industrial applications. Wetted materials include: **316 SS, A20, Hast. C, and Titanium.** Available sizes: 1/4" – 1".

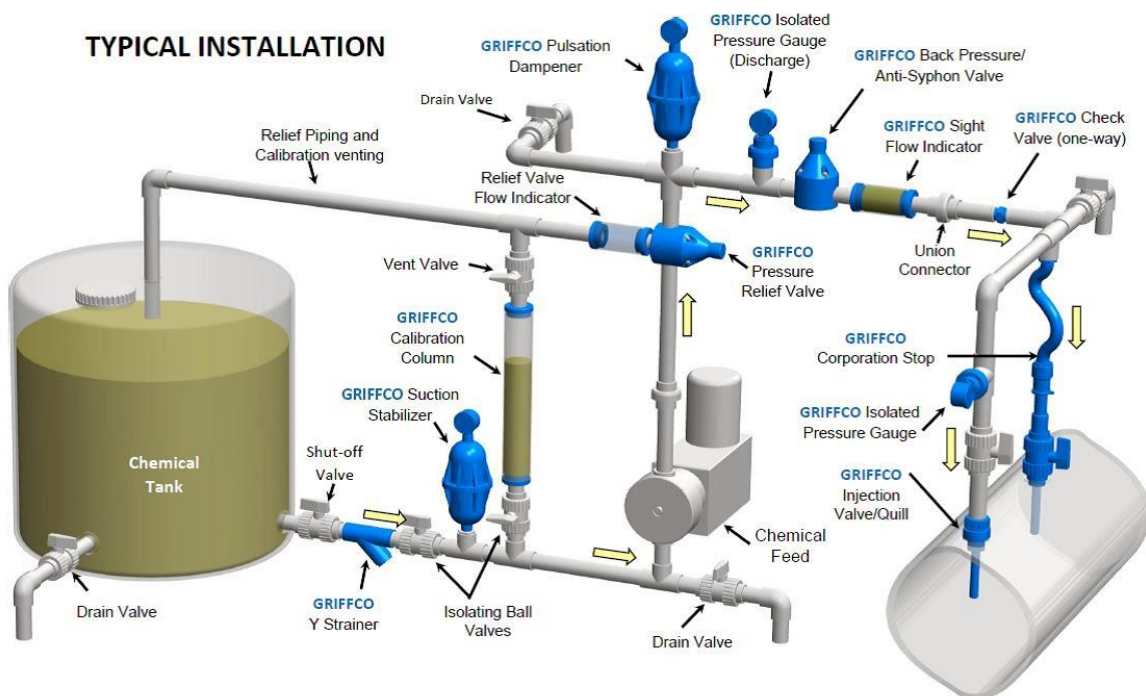
Features:

- 100 – 800 psi Pressure Range
- High Reliability/Low Cost
- Multiple Diaphragm Options
- Adjustable Pressure Range
- Anti-Siphon Function
- Robust, Machined Construction
- Tamper Resistant Adjustment Screw
- Wide Range of Materials

Operation:

Griffco diaphragm back pressure valves apply positive discharge pressure to a metering pump system to prevent siphoning and eliminate varying dosage rates caused by fluctuating downstream pressure. The diaphragm is held against the valve seat by an internal spring. When the pre-set pressure is exceeded, the diaphragm is forced up and chemical flows through the valve to the injection point. The valves are pre-set for 250 psi, however they are field adjustable from 100 - 800 psi via the adjustment screw. Installation should be as close to the injection point as possible to prevent chemical line drainage, and it is most important that all chemical system equipment such as pulsation dampeners and pressure gauges be rated to the maximum pressure set by the valve, and located between the pump and the back pressure valve. A pressure relief valve is required.

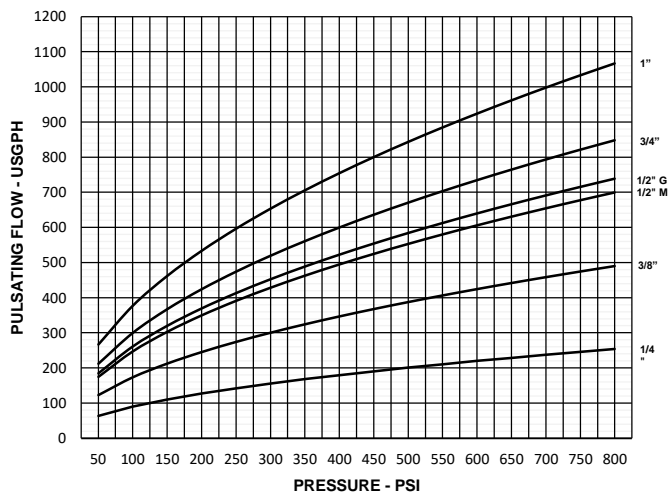
TYPICAL INSTALLATION



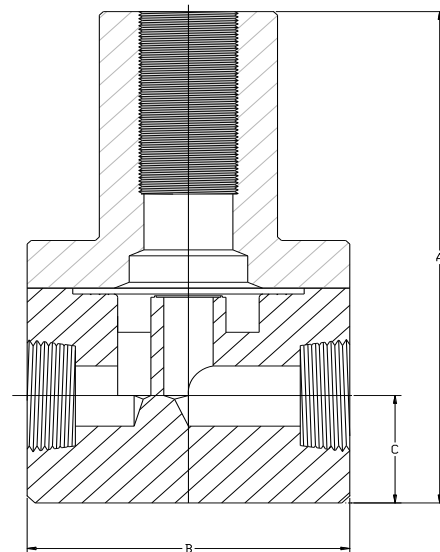
Technical Data:

Model BPMP Sizes			1/4", 3/8", 1/2", 3/4", 1"	
Connections:			NPT, BSPT, Socket, Flange (flanges not available on 1/4" and 3/8" valves)	
Pressure Adjustment			100 – 800 psi.	
Flow Rates @ 800 psi			Shipping Weight: lbs	
Size	Pulsating	Continuous	Metal / Metal Top	
1/4"	250 USgph	13 USgpm	1/4"	3
3/8"	490 USgph	25 USgpm	3/8"	3
1/2" M-Series	700 USgph	36 USgpm	1/2" M-Series	4
1/2" G-Series	740 USgph	38 USgpm	1/2" G-Series	10
3/4"	850 USgph	44 USgpm	3/4"	10
1"	1060 USgph	56 USgpm	1"	11
Max Operating Temperature: (°F)			300°, (Peak 390°)	
Max Operating Pressure (psi) @ 70 Deg. F			2000 psi	
Materials of Construction:				
Diaphragm & Seal			PTFE / EPDM, Optional: Viton®, Hypalon®, PTFE & PTFE / Viton®	
Valve Top			316 SS	
Valve Body			316 SS, A 20, Hast. C, Titanium	

Performance Curves:



Dimensions:



Product Codes For Ordering Back Pressure Valves:

BPMP

1 2 3 4

1 = Size **2 = Material** **3 = Spring Opt** **4 = Options**

M025 - 1/4" S - 316 SS Blank - 100-800 psi Blank - NPT Threaded
M038 - 3/8" A - Alloy 20 V - Viton® Diaphragm
M050 - 1/2" C - Hast C TV - PTFE/Viton Diaph.
G050 - 1/2" T - Titanium S - Socket Connection
G075 - 3/4" F - Flange Connection
G100 - 1" B - BSPT
90 - 90° Configuration

DIMENSIONS: BPMP / PRMP - Series			
All Materials			
Size	A (in.)	B (in.)	C (in.)
1/4"	4.000	2.350	0.750
3/8"	4.000	2.350	0.750
1/2" M Series	4.709	2.350	1.080
1/2" G Series	6.325	3.500	1.125
3/4"	6.325	3.500	1.125
1"	6.625	3.500	1.250

Example: 3/4" A20, Viton Diaphragm – BPMPG075AV

Email: info@chemfeed.nl

Website: www.chemfeed.nl