



Griffco fusion dampeners are designed to enhance the performance of chemical feed systems by providing a smooth, continuous flow of chemical, simplifying installation and reducing process connections. Available in 1/4", 3/8" and 1/2" connections. Materials of construction are PVC, CPVC, PP and PVDF. Volumetric sizes are 6 & 10 in³.

Features:

- Combines Back Pressure Function With Pulse Dampening
- Space Saving Design
- 3 Connection Sizes Available
- 2 Volumetric Sizes Available
- Multiple Diaphragm Materials
- Pressures Up To 150 psi
- Available in PVC, CPVC and PVDF
- Proven Griffco Reliability

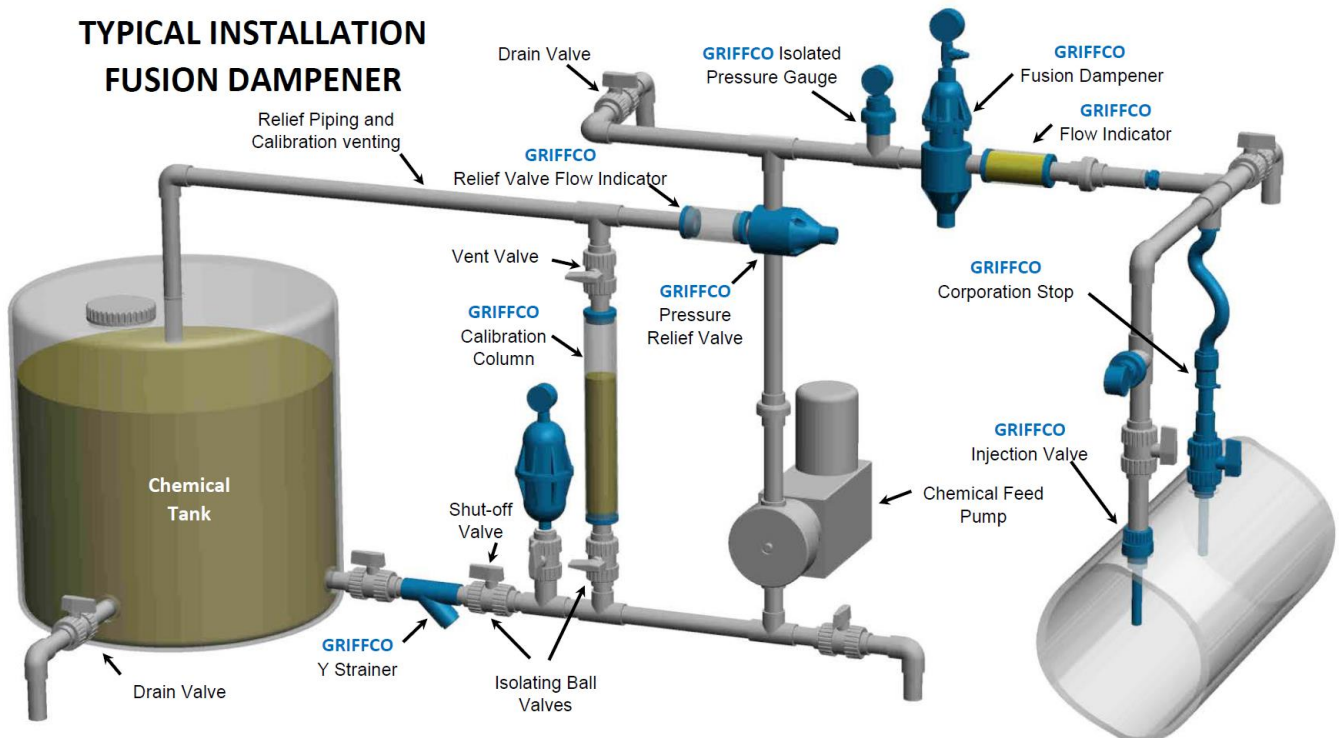
Information needed to size a dampener:

- 1 – Type of pump. (K factor)
 Simplex: Single Acting = .60; Double Acting = .25
 Duplex: Single Acting = .25; Double Acting = .15
 Triplex: Single Acting = .25; Double Acting = .15
- 2 – Volume/Stroke of dosing pump in cubic in (V)
- 3 – System mean operation pressure (P)
- 4 – Min and max operating pressure (Pmax & Pmin)
- 5 – Compressed charge in dampener (n)
 Compressed Air = 1.0; Nitrogen = .714

Required Dampener Capacity (C) Calculation:

$$C \text{ (cubic inches)} = \frac{(V) \times (K) \times (P/P_{min})^n}{1 - (P/P_{max})^n}$$

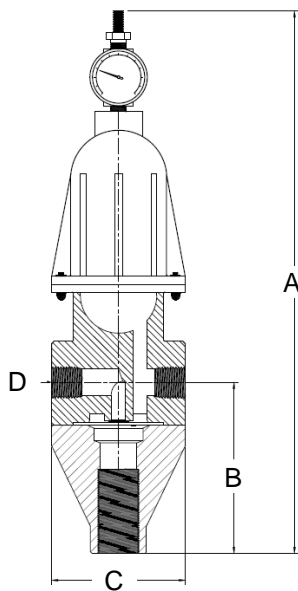
TYPICAL INSTALLATION FUSION DAMPENER



TECHNICAL DATA:

Materials of Construction:	Body: PVC, CPVC, PP and PVDF
Connection Sizes:	1/4", 3/8" and 1/2"
Connections:	NPT, BSPT Socket, Union
Gauge Port Size	1/8"
Max Recommended Temperature: (°F)	PVC: 140° ; CPVC & PP: 195°; PVDF: 300°
Max Operating Pressure (psi) @ 70 Deg. F	150 psi
Diaphragm Material	Std: EPDM. Optional: Viton®, Hypalon and PTFE
Gauge and Charging Valve Materials	Std.: Brass, Optional: 316 SS
Dampening Effect	± 2.5%
Optional Gauges	Std: 0 – 160 PSI; Optional: 0 – 60 PSI, 0 – 100 psi, 0 – 200 psi

DIMENSIONS:



Model	Size NPT / in ³	A (in)	B (in)	C (in)	D (in)
FPD025S	1/4"/ 6	11.125	1.125	3.500	1/4
FPD038S	3/8"/ 6	11.125	1.125	3.500	3/8
FPD050S	1/2"/ 6	11.125	1.125	3.500	1/2
FPD025L	1/4"/ 10	12.500	1.125	3.500	1/4
FPD038L	3/8"/10	12.500	1.125	3.500	3/8
FPD050L	1/2"/ 10	12.500	1.125	3.500	1/2

Product Codes for Ordering:

FPD

1 2 3 4 5 6

1 = Size
Connection/Vol

2 = Housing
Material

3 = Bladder
Material

4 = Gauge
Options

5 = Range
Options

6 = Other
Options

025S - 1/4"/6 in³

P - PVC

E – EPDM

0 – Brass Hardware & Gauge

1 – 160 psi

B – BSPT Connection

025L - 1/4"/10 in³

CP - CPVC

H - Hypalon

1 – Brass / Brass & SS Gauge

2 – 60 psi

S – Soc Connection

038S - 3/8"/6 in³

PP - Polypro

V - Viton

2 – SS Hardware & Gauge

3 – 100 psi

U – Union Connection

038L - 3/8"/10 in³

K - PVDF

T - PTFE

4 – 200 psi

V – Viton Diaphragm

050S - 1/2"/6 in³

050L - 1/2"/10 in³