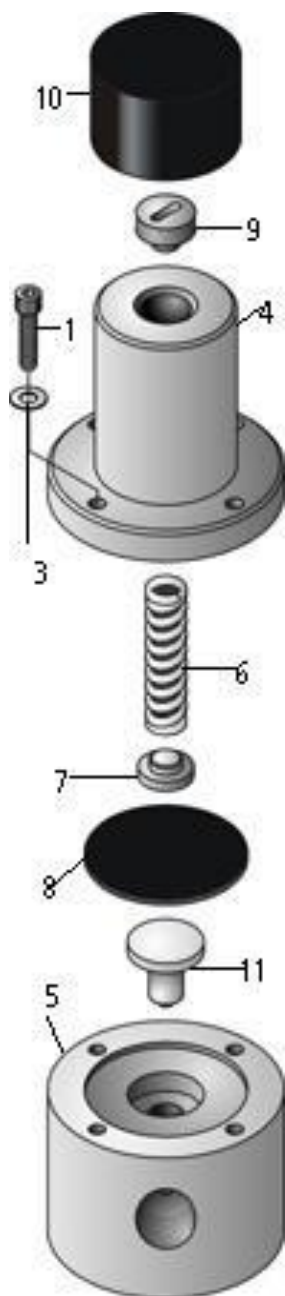


## PARTS LIST



ITEM	DESCRIPTION	PART #
1	Bolt - 1/4" Metal Valves – 10/32 X 3/4" Bolt - 1/2 - 1" Metal Valves – 1/4 - 20 x 1 1/4"	PV-00107 PV-00108
2	N/A	N/A
3	10/32 Flat washer 1/4 Flat washer	PV-00301 PV-00302
4	1/4" – 1/2" HP Valve Top – 316 SS 3/4" - 1" HP Valve Top - 316 SS	PV-00403HP PV-00407HP
5	1/4" Valve Body High Pressure - 316 SS 1/4" Valve Body High Pressure - Alloy 20 1/4" Valve Body High Pressure - Hast C 3/8" Valve Body High Pressure - 316 SS 3/8" Valve Body High Pressure - Alloy 20 3/8" Valve Body High Pressure - Hast C 1/2" Valve Body High Pressure - 316 SS 1/2" Valve Body High Pressure - Alloy 20 1/2" Valve Body High Pressure - Hast C 3/4" Valve Body High Pressure - 316 SS 3/4" Valve Body High Pressure - Alloy 20 3/4" Valve Body High Pressure - Hast C 1" Valve Body High Pressure - 316 SS 1" Valve Body High Pressure - Alloy 20 1" Valve Body High Pressure - Hast C	PRV-00505HP PRV-00506HP PRV-00507HP PRV-00565HP PRV-00566HP PRV-00567HP PRV-005151HP PRV-005161HP PRV-005171HP PRV-00525HP PRV-00526HP PRV-00527HP PRV-00535HP PRV-00536HP PRV-00537HP
6	Pressure Spring - 1/4" – 1/2" Valve Pressure Spring - 3/4" – 1" Valve	PV-006012 PV-006122
7	Support Disc - 1/4 - 1/2" Valve, 316 SS Support Disc - 3/4" - 1" Valve, 316 SS	PV-00702 PV-00706
8	Diaphragm - 1/4" – 1/2" Valve – PTFE/EPDM Diaphragm - 1/4" – 1/2" Valve – Viton Diaphragm – 3/4" – 1" Valve – PTFE/EPDM Diaphragm – 3/4" – 1" Valve – Viton	PV-00800 PV-00802 PV-00810 PV-00812
9	Adjustment Screw - 1/4" - 1" Valve Coated Steel	PV-00903
10	Plastic Cap – 1/4" – 1/2" Plastic Cap – 3/4" – 1"	PV-01001 PV-01002
11	1/4" – 1" HP Piston - PVDF	PHP00851

**Warranty:** GRIFFCO Valve, Inc. warrants its products against defects in workmanship and materials for one year under normal use or 18 months from date of shipment whichever occurs first. All obligations and liabilities under this warranty are limited to repair or replacement (at our option), FOB our plant such allegedly defective units as are returned to our factory transport prepaid. Repairs or replacements are made subject to inspection of returned items.

This warranty does not extend to damage by corrosion or erosion. The materials of construction offered are recommendations subject in all cases to acceptance by the customer. These recommendations, based on previous experience and best available information, do not constitute guarantees against wear or chemical action. Expressly excluded from this warranty are defects caused by misuse, abuse or improper application, installation or operation of the unit. No liability for consequential damages or reinstallation labor is accepted. GRIFFCO Valve, Inc. will not assume responsibility for contingent liability for alleged failure of its produce.