



chemfeed

Exclusive Griffco distributor
Regulierrenng 26
NL-3981LA Bunnik
www.chemfeed.nl
info@chemfeed.nl
Tel: +31 88 022 5300

PRS Series Relief Valve with Pressure Switch



Features:

- Integrated Into Pressure Relief Valve
- Adjustable Pressure Setting
- Isolation Chamber To Protect Switch
- SPST Switch 100 VA Max
- Robust, Machined Construction
- Switch Isolator Filling Port
- Wide Range of Materials
- Optional Gauge Port

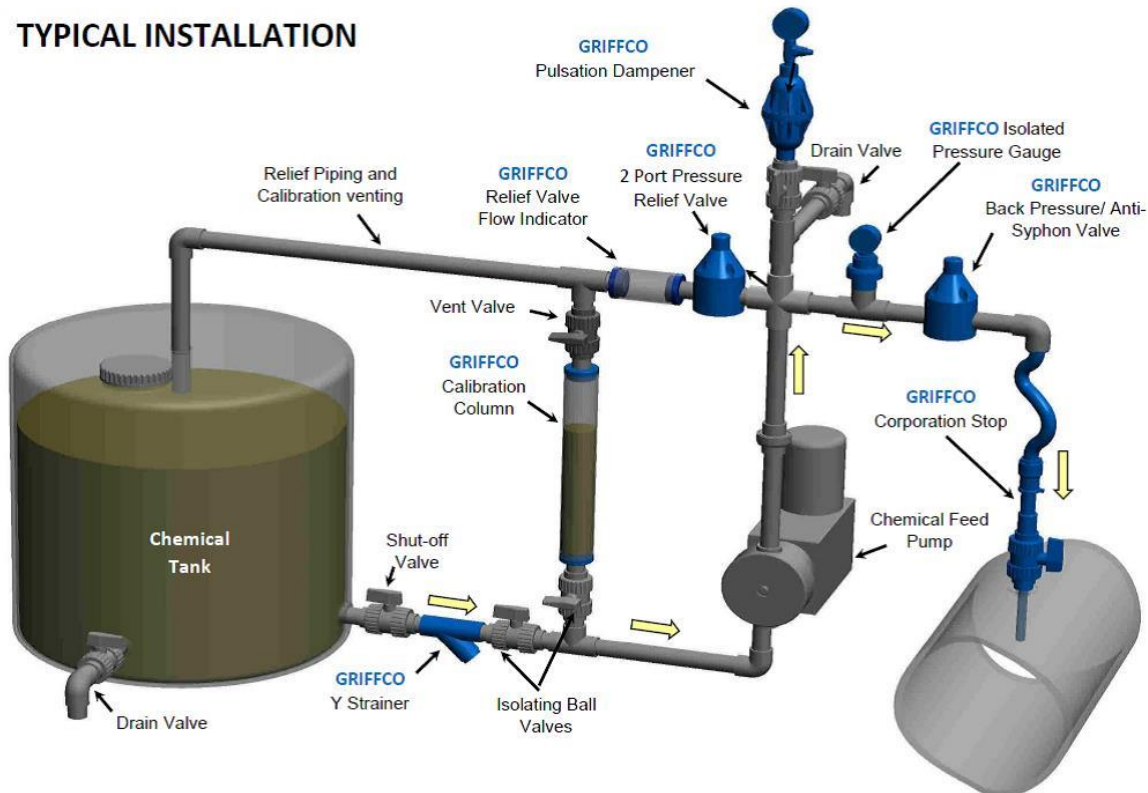
Operation:

The Griffco Pressure Relief Valve with Pressure Switch is installed in an integrated instrument isolator mounted to the bottom of the relief valve. When the pressure relief valve relieves the overpressure, the pressure is transmitted through the isolating diaphragm to the switch. The switch changes condition and an alarm signal is triggered. Once the alarm condition is corrected the switch returns to its original position.

Griffco's Pressure Relief Valve with Pressure Switch is designed to protect chemical feed pumps and systems by sending an alarm signal to a control station or panel. The signal is to alert personnel that there is a problem in the chemical feed system and that the relief valve is open.

The switch has an adjustable set point and multiple customer selected ranges. Switch housings are available in zinc plated steel or optional 316L SS. A convenient fill port on the side of the instrument isolator is provided.

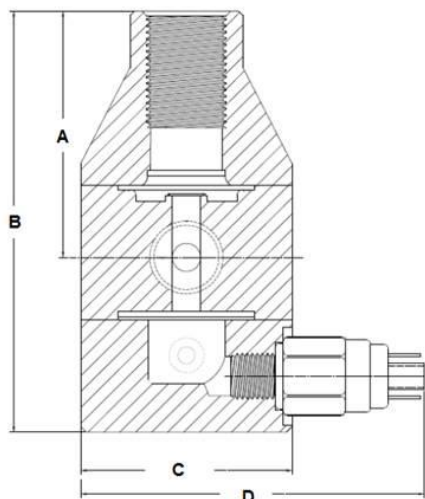
TYPICAL INSTALLATION



Technical Data:

Sizes:				M-Series - 1/4", 3/8", 1/2" and G-Series - 1/2", 3/4", 1"			
Connections:				NPT, BSPT, Socket, Union			
Pressure Relief Valve Adjustment				Standard: 0,7 - 10 Bar; Optional: 0- 4 Bar			
Pressure Switch Range				Standard: 1 – 4 Bar; Optional: 3 – 10 Bar			
Switch Rating				100 VA max. Normally Open Contact			
M-Series Flow Rates @ 10 bar		Shipping Weight: gram		G-Series Flow Rates @ 10 bar		Shipping Weight: gram	
Size	Pulsating	Continuous		Size	Pulsating	Continuous	
1/4"	378 L/Hr	19 L/min	910	1/2"	1.210 L/Hr	63 L/min	1.360
3/8"	757 L/Hr	38 L/min	910	3/4"	1.390 L/Hr	73 L/min	1.360
1/2"	1.135 L/Hr	57 L/min	910	1"	1.750 L/Hr	92 L/min	1.590
Max Temperature: (°C)				PVC: 60°; CPVC & PP: 90°; PVDF: 150° (Peak 200°)			
Max Operating Pressure @ 21°C				16 bar			
Materials of Construction:							
Valve Diaphragm				Standard: PTFE / EPDM, Optional: Viton, Hypalon, PTFE / Viton			
Instrument Isolator Diaphragm				Standard: PTFE, Optional: Viton			
Valve Body				PVC, CPVC, PP, PVDF			
Instrument Isolator Body				Standard: PVC, Optional: CPVC, PP or PVDF			
Switch Body				Standard: Zinc Plated Steel, Optional: 316L SS			

DIMENSIONS:



DIMENSIONS: PRS Series

All Materials

Size	A (mm)	B (mm)	C (mm)	D (mm)
1/4"	68,6	119,4	59,7	96,5
3/8"	68,6	119,4	59,7	96,5
1/2" M	78,7	139,7	59,7	96,5
1/2" G	116,8	175,3	88,9	127,0
3/4"	116,8	175,3	88,9	127,0
1"	120,7	182,9	88,9	127,0

Product Codes for Ordering:

PRS

 1 2 3 4 5

1 = Size

M025 - 1/4"
M038 - 3/8"
M050 - 1/2"
G050 - 1/2"
G075 - 3/4"
G100 - 1"

2 = Material

P - PVC
CP - CPVC
PP - Polypro
K - Kynar

3 = Spring

Blank -0,6 – 10 bar
1 - 0 – 3,5 bar

4 = Options

Blank - NPT & Std Diaphragm
V - Viton Diaphragm
TV - PTFE/Viton Diaphragm
S - Socket Connection
F - Flanged Connection
U - Union Connection
G - Gauge + Class & Range

5 = Switch Options

Blank - Standard Body, 1 – 4 bar Switch
4 - Standard Body, 3 – 10 bar Switch
5 - 316L SS Body, 1 – 4 bar Switch
6 - 316L SS Body, 3 – 10 bar Switch
X after 4, 5, or 6 above for Normally Closed

Gauge Class

(Only with Option "G")

1 - Economy
2 - Mid Range
3 - Premium

Pressure Range

1 - 0 – 11 bar
2 - 0 - 4 bar
3 - 0 – 7 bar

Website: www.chemfeed.nl

Email: info@chemfeed.nl