



**chemfeed**

Exclusive Griffco distributor  
 Regulierenring 26  
 NL-3981LA Bunnik  
[www.chemfeed.nl](http://www.chemfeed.nl)  
[info@chemfeed.nl](mailto:info@chemfeed.nl)  
 Tel: +31 88 022 5300

# G-SERIES

# BACK PRESSURE VALVES



**Griffco G-Series** diaphragm back pressure valves are designed to enhance the performance of chemical feed systems by applying a continuous back pressure to the chemical feed pump, while also acting as an anti-siphon valve. Robust construction ensures reliability in the rigorous service of municipal and industrial applications. Wetted materials include: **PVC, CPVC, PP, PVDF, PTFE, Halar, 316 SS, A20 and Hast. C.** Available sizes: 1/2" – 4".

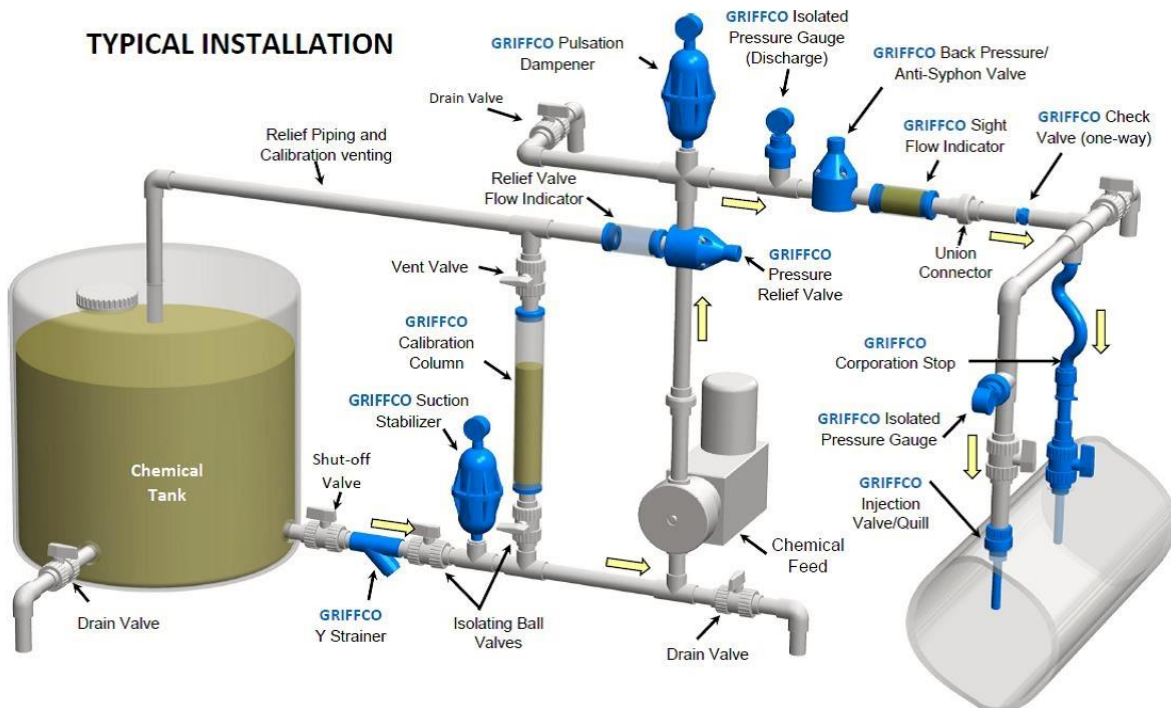
## Features:

- Molded Noryl Top
- High Reliability/Low Cost
- Molded PTFE/EPDM Diaphragm
- Adjustable Relief Settings
- Optional Pressure Rated Valves
- Anti-Siphon Function
- Robust, Machined Construction
- Tamper Resistant Adjustment Screw
- Wide Range of Materials

## Operation:

**Griffco** diaphragm back pressure valves apply positive discharge pressure to a metering pump system to prevent siphoning and eliminate varying dosage rates caused by fluctuating downstream pressure. The diaphragm is held against the valve seat by an internal spring. When the preset pressure is exceeded, the diaphragm is forced up and chemical flows through the valve to the injection point. The valves are preset for 3,5 bar, however they are field adjustable from 1 – 10 bar via the adjustment screw. Installation should be as close to the injection point as possible to prevent chemical line drainage and it is most important that all chemical system equipment such as pulsation dampeners and pressure gauges are between the pump and back pressure valve.

## TYPICAL INSTALLATION

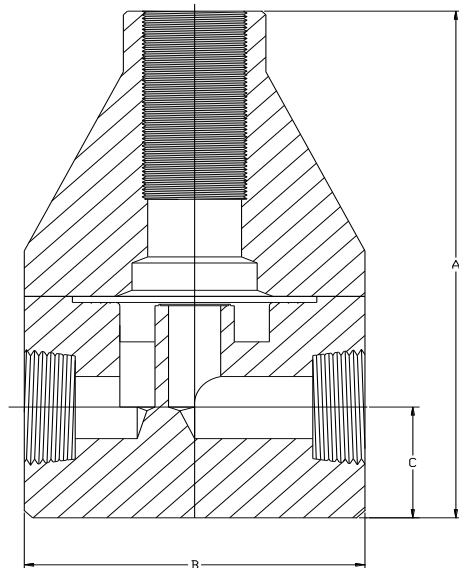
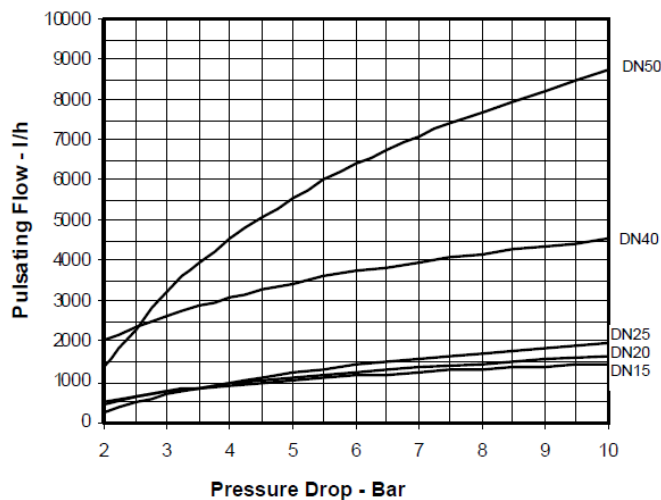


## Technical Data:

<b>Model BPG Sizes</b>			1/2", 3/4", 1", 1 1/2", 2", 3", 4" (DN15, 20, 25, 40, 50, 80, 100)		
<b>Connections:</b>			NPT, Socket, Union, Flange		
<b>Pressure Adjustment</b>			Standard: 1 – 10 bar; Optional: 0 – 3,5 bar, 1 – 17 bar, 3,5 – 25 bar *Note: Size 1 1/2" and Larger BPG valves 1 – 17 bar Max range ONLY.		
<b>Flow Rates @ 10 bar</b>			<b>Shipping Weight: gram</b>		
<b>Size</b>	<b>Pulsating</b>	<b>Continuous</b>	<b>Plastic</b>	<b>Metal / Plastic Top</b>	<b>Metal / Metal Top</b>
1/2"	1.135 L/Hr	4.770 L/Hr	1.400	2.500	3.000
3/4"	1.135 L/Hr	4.770 L/Hr	1.400	2.500	3.000
1"	1.890 L/Hr	5.900 L/Hr	1.600	2.700	3.200
1 1/2"	4.542 L/Hr	14.300 L/Hr	4.000	8.000	12.500
2"	8.892 L/Hr	28.400 L/Hr	4.000	9.000	13.600
3"	19.600 L/Hr	61.200 L/Hr	12.700		
4"	19.600 L/Hr	61.200 L/Hr	13.600		
<b>Max Temperature: (°C)</b>			PVC: 60° ; CPVC & PP: 90°; PTFE, PVDF & Metal: 150°, (Peak 200°)		
<b>Max Operating Pressure @ 21°C</b>			Plastic/Noryl: 21 bar		Metal/Metal: 135 bar
<b>Materials of Construction:</b>					
<b>Diaphragm</b>			PTFE / EPDM, Optional: Viton, Hypalon, & PTFE / Viton		
<b>Valve Top</b>			Standard: 1/2" – 2" Noryl 3" & 4" PVC Optional: 316 SS		
<b>Valve Body</b>			PVC, CPVC, PP, PTFE, PVDF, Halar, 316 SS, Alloy 20, Hastelloy C		

## Dimensions:

Performance Curves: 3" & 4", DN 80 & DN100 curves on request



## Product Codes For Ordering Back Pressure Valves:

**BPG**        
 1 2 3 4

**1 = Size** 050 - 1/2" 075 - 3/4" 100 - 1" 155 - 1 1/2" 200 - 2" 300 - 3" 400 - 4"  
**2 = Material** P - PVC CP - CPVC PP - Polypro T - PTFE K - PVDF H - Halar S - 316 SS A - Alloy 20 C - Hastelloy C  
**3 = Spring Opt** Blank - 1 – 10 bar 1 - 0 – 3,5 bar 2 - 1 – 17 bar For 3,5 – 25 bar spring use option code "MSS"  
**4 = Options** Blank- NPT, PTFE/EPDM V - Viton Diaphragm TV - PTFE/Viton Diaph. S - Socket Connection F - Flange Connection U - Union Connection OSS - 316 SS Top MSS - 3,5 – 25 bar AR - Priming Valve 90 - 90° Configuration

DIMENSIONS: BPG - Series				
All Materials (See Note below for 4" PVC & CPVC)				
Size	A (mm)	B (mm)	C (mm)	Orifice(mm)
1/2"	141,2	89,0	28,6	9,52
3/4"	141,2	89,0	28,6	9,52
1"	148,8	89,0	31,2	11,1
1.5"	212,1	124,5	46,4	19,0
2"	226,0	124,5	54,6	22,2
3" *	298,5	380,1 *	76,2	38,1
4" * **	298,5	380,1 **	76,2	38,1

\* Note 3" & 4" are flanged only \*\* B Dim on 4" PVC & CPVC is 17"

Note: Option MSS only for use with 316SS, Alloy 20 & Hastelloy C. valves.