

G - SERIES PRESSURE RELIEF VALVE



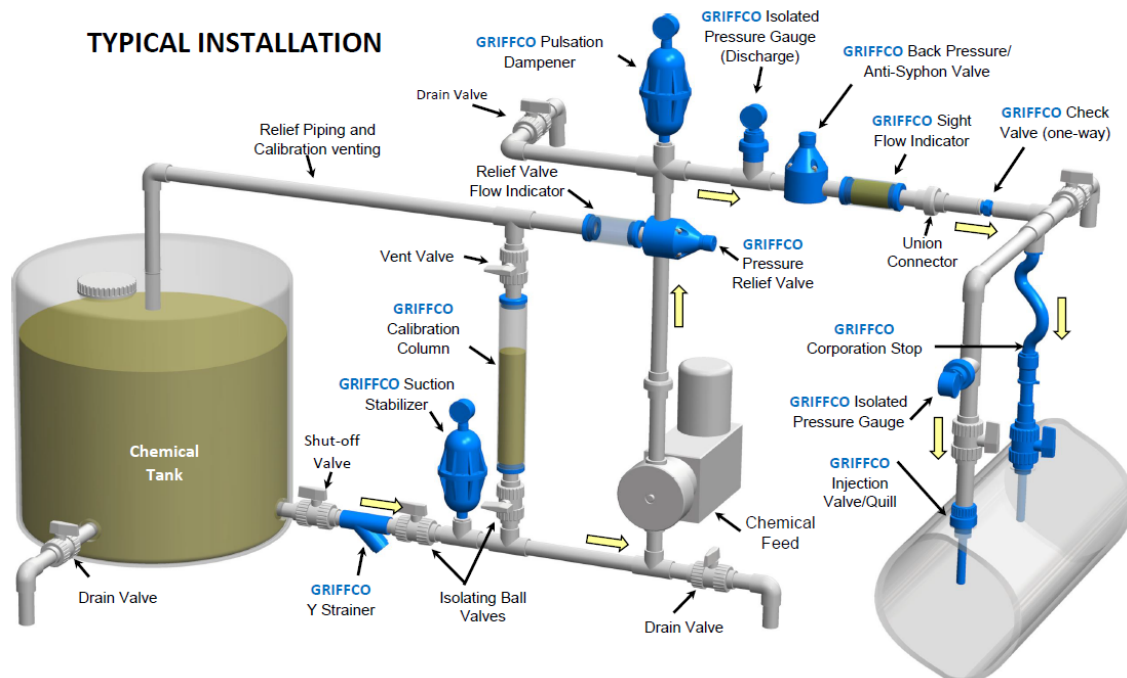
Griffco G-Series diaphragm pressure relief valves are designed to protect chemical feed systems from over pressure damage caused by defective equipment or a blockage in the chemical feed line. Robust construction ensures reliability in the rigorous service of municipal and industrial applications. Wetted materials include: **PVC, CPVC, PP, PVDF, PTFE, Halar, 316 SS, Alloy 20 and Hastelloy C.** Available sizes: 1/2" - 4".

Features:

- Molded Noryl Top
- High Reliability / Low Cost
- Molded PTFE/EPDM Diaphragm
- Adjustable 0,7 – 10 bar
- Optional: Other bar Rated Valves
- 2 & 3 Port Configurations
- Ventable to Suction Line
- Robust, Machined Construction
- Wide Range of Materials

Operation:

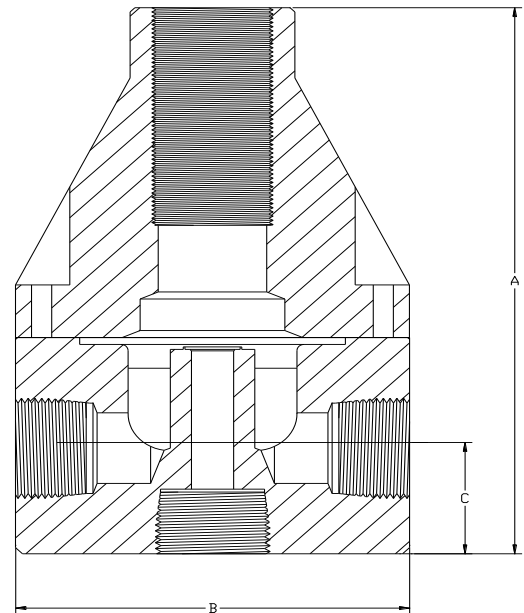
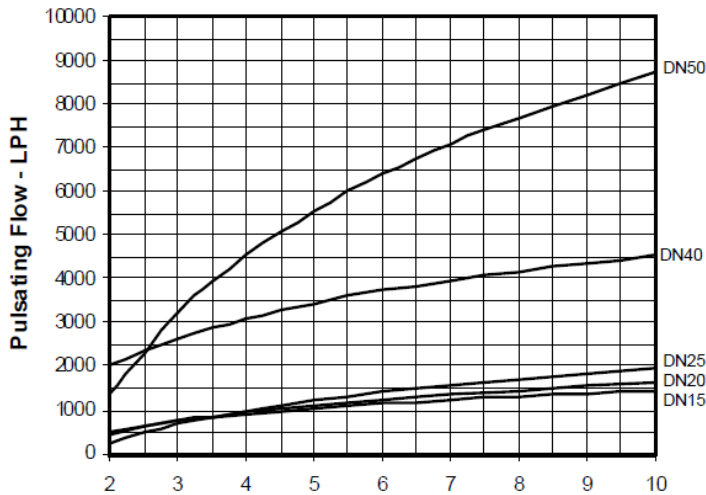
Griffco diaphragm pressure relief valves operate when the pressure in the chemical system exceeds the preset pressure of the valve. The diaphragm is held against the valve seat by an internal spring. When the preset pressure is exceeded the diaphragm is forced up and the chemical flows out the relief port, back to the chemical tank or to the suction side of the pump. The valves are pre-set at 3,5 bar, however they are field adjustable from 0,7 – 10 bar, (up to 24 bar) via the adjustment screw. The relief valve should be set approximately 1 bar higher than the system pressure. Installation should be made as close to the pump as possible, without any valves or accessories between the relief valve and the pump. Consult your pump manufacturer for their recommendations.



Technical Data:

Model PRG Sizes: PRG, PRG2 (2 port)			1/2", 3/4", 1", 1 1/2", 2", 3", 4"		
Connections:			NPT, Socket, Union, & Flange		
Pressure Adjustment			Standard: 0,7 - 10 bar, Optional: 0 – 3,5 bar, 0,7 – 17 bar, 3,5 – 24 bar *Note: Size 1 1/2" and larger PRG valves 0,7 – 17 bar Max range ONLY.		
Flow Rates @ 10 bar			Shipping Weight: gram		
Size	Pulsating	Continuous	Plastic	Metal / Plastic Top	Metal / Metal Top
1/2"	1.210 L/Hr	63 L/min	1.360	2.500	2.950
3/4"	1.390 L/Hr	73 L/min	1.360	2.500	3.175
1"	1.750 L/Hr	92 L/min	1.590	2.725	3.175
1 1/2" (2 port only)	5.250 L/Hr	275 L/min	3.175	6.350	10.435
2"	5.830 L/Hr	304 L/min	4.085	9.070	13.610
3"	19.520 L/Hr	1.022 L/min	12.700		
4"	19.520 L/Hr	1.022 L/min	13.610		
Max Temperature: (°C)			PVC: 60° ; CPVC & PP: 90°; PTFE, PVDF, & Metal: 150°, (Peak 200°)		
Max Operating Pressure @ 21 °C			Plastic/Noryl: 25 bar		Metal/Metal: 138 bar
Materials of Construction:					
Diaphragm			PTFE / EPDM, Optional: Viton, Hypalon, & PTFE / Viton		
Valve Top			Standard: Noryl (1/2" – 2") PVC (3" & 4") Optional: 316 SS L		
Valve Body			PVC, CPVC, PP, PTFE, PVDF, Halar, 316 SS L, A 20, Hast. C		

Performance Curves: (3" & 4", DN 80 & 100 curves on request) Dimensions:



Product Codes For Ordering Pressure Relief Valves:

PRG, PRG2 (2 port) or

1 2 3 4

1 = Size 050 - 1/2" 075 - 3/4" 100 - 1" 155 - 1 1/2" 200 - 2" 300 - 3" 400 - 4"

2 = Material P - PVC CP - CPVC PP - Polypro T - PTFE K - PVDF H - Halar S - 316 SS A - Alloy 20 C - Hastelloy C

3 = Spring Opt Blank - 0,7-10 bar 1 - 0 – 3,5 bar 2 – 0,7 – 17 bar For 3,5-24 bar spring use option code "MSS"

4 = Options Blank - NPT Threaded V - Viton Diaphragm TV - PTFE/Viton Diaph. S - Socket Connection F - Flange Connection U - Union Connection OSS - 316 SS Top MSS – 3,5 – 24 bar AR - Priming Valve 90 - 90° Configuration

Note: For Optional 2-Port pressure relief valve put "2" after PRG

DIMENSIONS: PRG - Series				
All Materials (See Note below for 4" PVC & CPVC)				
Size	A (mm)	B (mm)	C (mm)	Orifice (mm)
1/2"	141,2	88,9	28,6	9,5
3/4"	141,2	88,9	28,6	9,5
1"	148,8	88,9	31,8	11,0
1.5"	212,0	124,5	46,4	19,0
2"	226,0	124,5	54,6	22,2
3" *	285,8	381,0 *	76,2	38,1
4" ***	285,8	381,0 **	76,2	38,1

* Note 3" & 4" are flanged only. **Dim B on 4" PVC & CPVC is 431,8mm

Note: Option MSS only for use with 316SS, Alloy20 & Hastelloy C. valves
Note: 1.5" and larger are 2 port only, there is no bottom port.

Email: info@chemfeed.nl

Website: www.chemfeed.nl ,